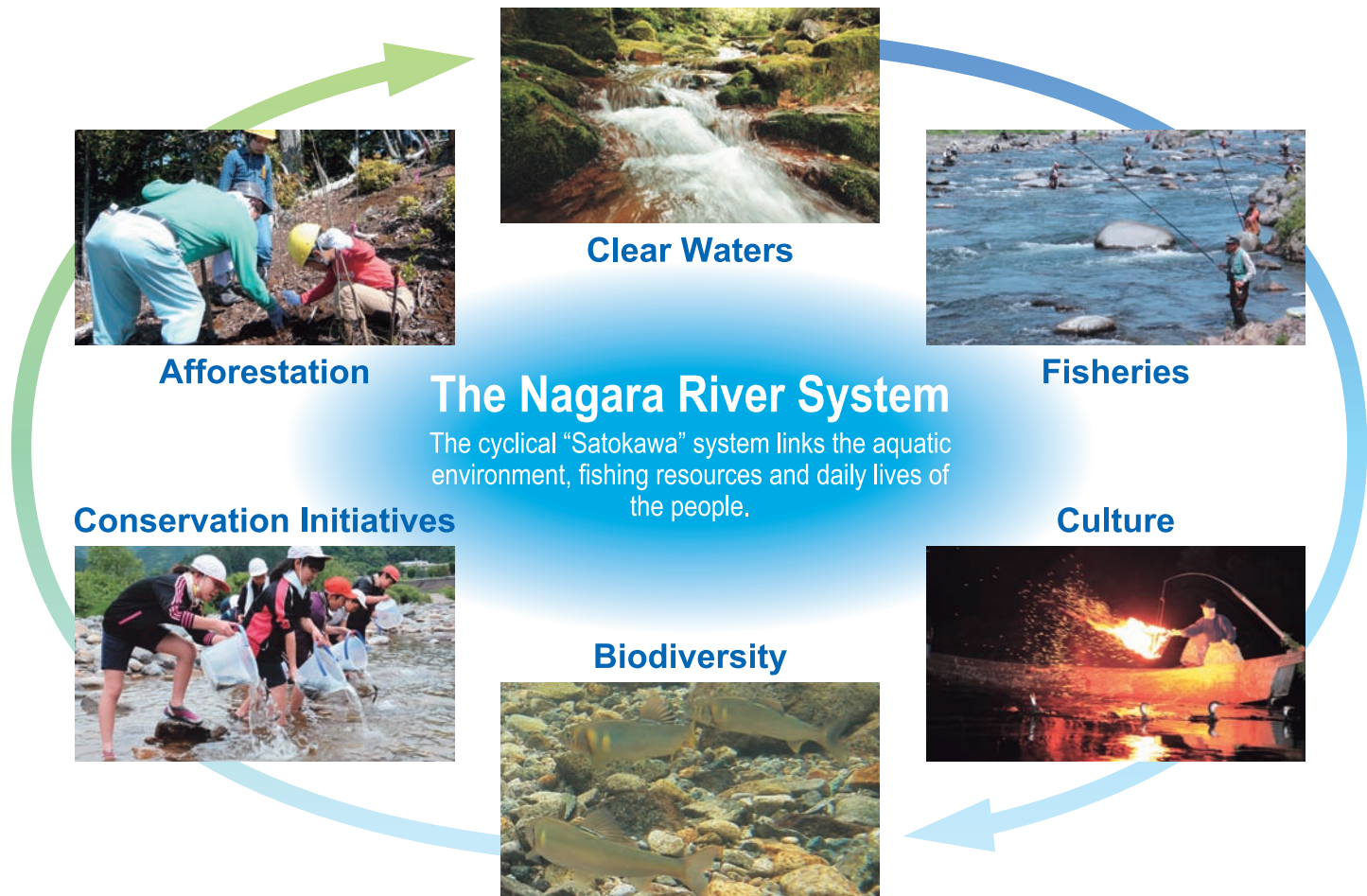


**Globally Important
Agricultural
Heritage System
(GIAHS)
and Ayu**

The Globally Important Agricultural Heritage Systems (GIAHS) initiative was established by the FAO in 2002, with the aim of ensuring the passing on of globally important regions where the environment and land are leveraged in the practice of traditional agriculture, forestry and fisheries, and in which all of these factors come together with a farming culture and landscapes to form a comprehensive system. Ayu (or sweetfish) is a migratory fish that moves between rivers and the sea over the course of its one-year life span. Gifu boasts the largest yield of ayu in the country and it is designated as the prefectural fish. Ayu has been a valuable source of protein and enhances the economy and culture along the basin of the Nagara River.



Logo of Ayu of the Nagara River System

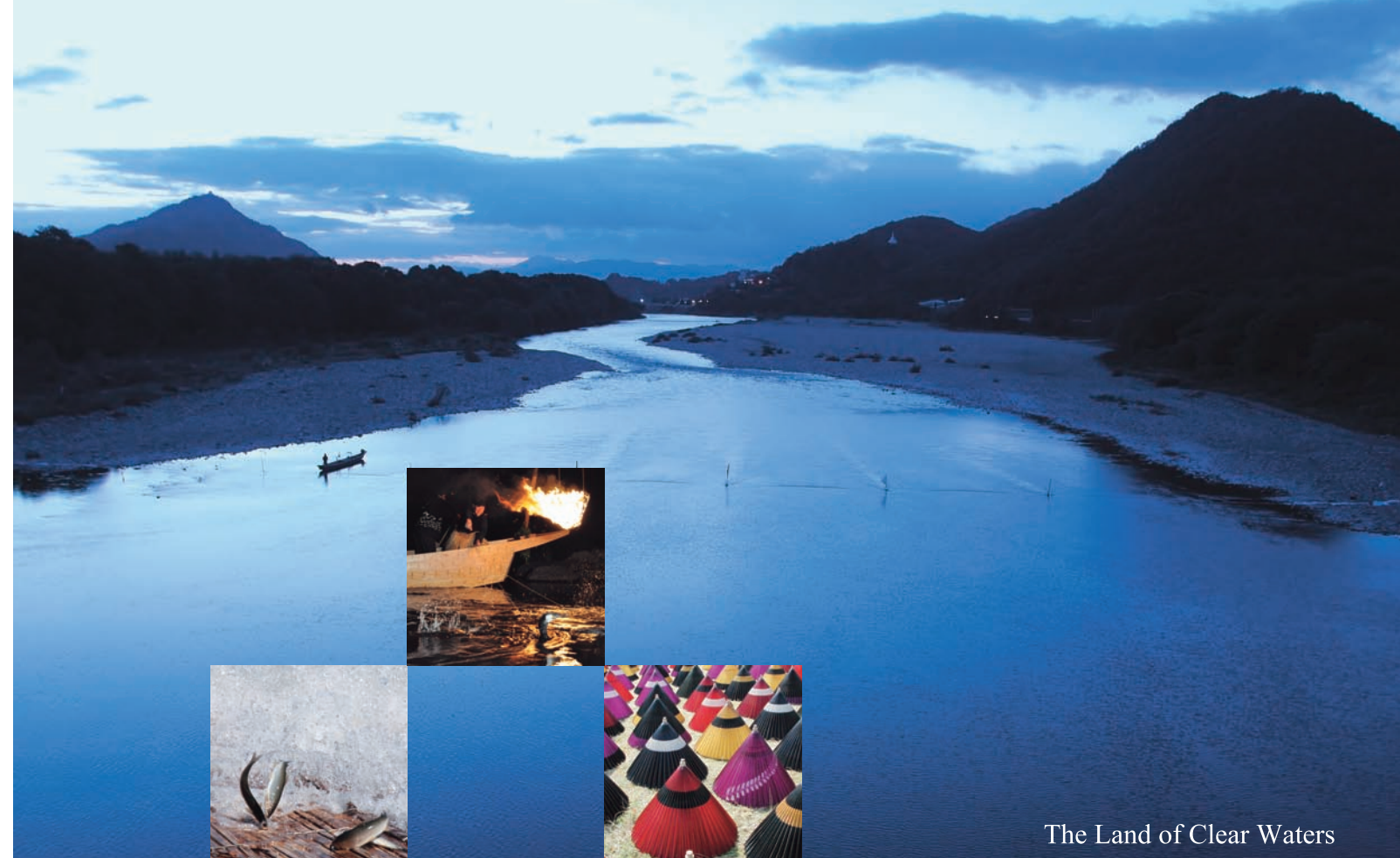
This logo shows a Nagara River ayu swimming in clear blue water which streams forth from the lush green mountains.

Contact

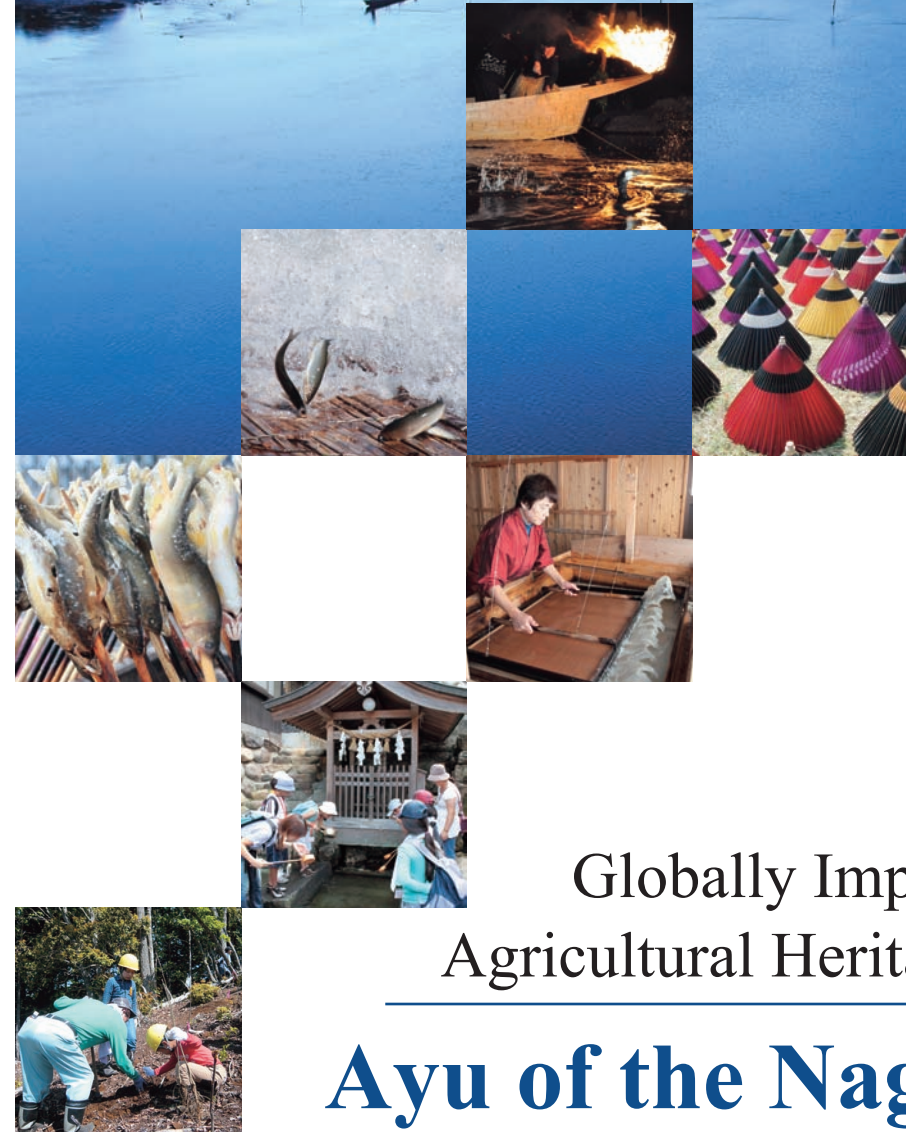
GIAHS "Ayu of the Nagara River System" Promotion Association

Satokawa Promotion Division, Department of Agricultural Policy
2-1-1 Yabutaminami, Gifu City, Gifu Prefecture 500-8570 JAPAN
TEL +81-58-272-8455 FAX +81-58-278-2695 E-mail c11428@pref.gifu.lg.jp

Ayu of the Nagara River System [Web](#)



The Land of Clear Waters



世界農業遺産
清流長良川鮎

Globally Important
Agricultural Heritage System

**Ayu of the Nagara River
System**

